



*Your Roof. For Life!  
On Time and Complete!™*



**METAL ROOFING | METAL PANELS | METAL BUILDING SOLUTIONS**  
**PRODUCT CATALOG**



*Your Roof. For Life!  
On Time and Complete!™*

## EXPOSED FASTENER

MasterRib.....	3
PBC.....	4
1-1/4" & 2-1/2" Corrugated .....	5
5V.....	6
PBR/IR Panel.....	7
PBU.....	8

## ARCHITECTURAL STANDING SEAM

Slimline.....	9
SL150 .....	10

## STRUCTURAL STANDING SEAM

SL175.....	11
Double-Lok .....	12

## SOFFIT/FLUSH PANELS

FL100.....	13
------------	----

## WARRANTIES

Warranties .....	14
------------------	----

## SYSTEM COMPONENTS

Metal Roofing System Components.....	15
--------------------------------------	----

## ROOF EDGES AND FLASHING FOR ASPHALT ROOFS

Roof Edges and Flashing .....	16
-------------------------------	----

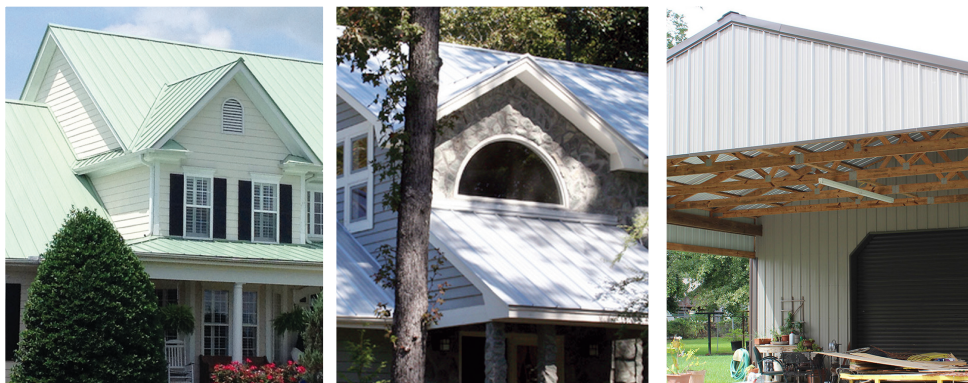
## METAL BUILDINGS

Pre-Engineered Metal Buildings.....	17-18
Metal Building Components .....	19
Mini Storage Solutions.....	20

## TRAINING AND SALES TOOLS

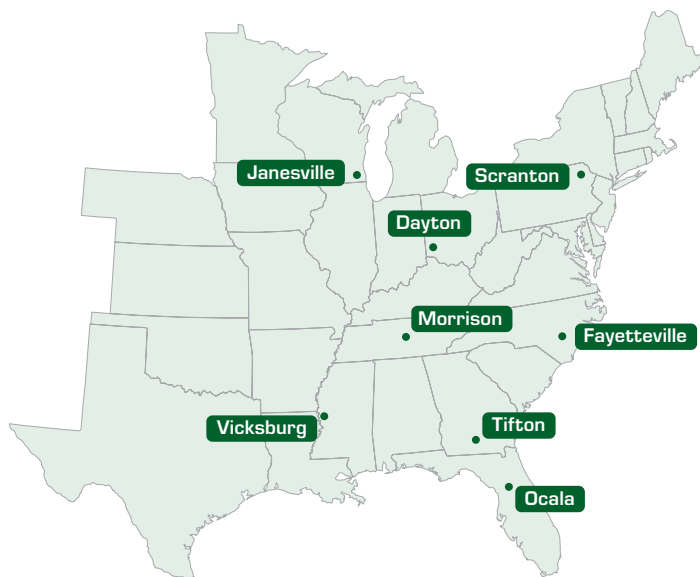
MasterQuote Online Order System.....	21
MetalPro Contractor Program.....	22
Install Videos and Apps.....	23

# AN INDUSTRY LEADER IN METAL ROOFING MATERIALS AND SUPPLIES.



Union Corrugating serves the residential, commercial, and agricultural roofing and siding markets from strategically located manufacturing facilities. Since 1946, Union has weathered the test of time, and we stand behind all of our products with some of the best warranties in the business.

**Our mission** is to be the most convenient metal roofing supplier for our customers. We will accomplish this by offering fast and reliable deliveries, high quality products, an easy and pleasant ordering experience, friendly hands-on technical support, and the best sales tools in the industry. We will achieve this by having the best people in the industry and engaging them to continually improve the customer experience.







## TESTING AND APPROVALS

- Miami-Dade Approved for Wind Uplift
- Texas Department of Insurance Approved
- No Coastal Set Back
- UL 580 Class 90 Wind Uplift Construction #584
- UL 790 Fire Resistance Class A
- UL 2218 Impact Act Resistance Class 4
- Texas Department of Insurance Approval #116
- Metal Construction Association (MCA) Certified
- Miami Dade County NOA Available
- Florida Building Code Approved:
  - 42378.7 - 29ga or 26ga, 18ga or 16ga (min) framing - wall
  - 42378.8 - 29ga, Rib 2x2 (min) blocking - wall
  - 42379.1 - 29ga or 26ga, 1x4 (min) subpurlins on plywood or OSB
  - 42379.2 - 29ga or 26ga, 15/32" plywood or 19/32 (min) plywood or 7/16 (min) OSB
  - 42382.7 - 29ga or 26ga, 18ga or 16ga (min) purlins
  - 42382.8 - 29ga, 1x4 (min) wood purlins

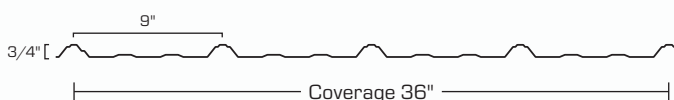
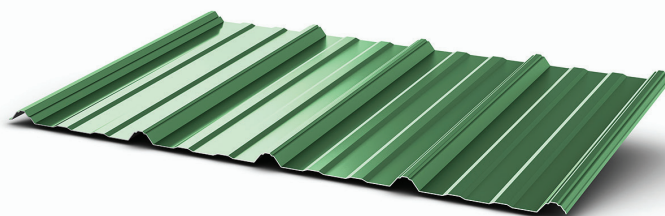
MasterRib is our most popular metal roofing panel and is an industry leader in strength and durability. This versatile metal roofing panel features classic looks and is used in a wide range of roofing and sidewall applications, including residential, commercial, post-frame, and agricultural. MasterRib was designed with extra-wide ribs to increase strength and ease handling and installation. Another unique feature of the MasterRib panel is the extra-large siphoning channel on the under-lap rib which provides extra leak resistance in extreme wind and rain loads.

## SPECIFICATIONS

- Exposed fastener panel for roof and wall applications
- 3:12 minimum recommended roof pitch
- Suitable for solid deck or open framing

## SUBSTRATES AND COATINGS

- High-strength steel substrate
- Anti-corrosion Galvalume® coating for painted and unpainted steel
- 29 and 26 gauge unpainted Galvalume® Plus
- 29 gauge unpainted galvanized with acrylic coating
- 29 and 26 gauge Signature® 200 siliconized polyester paint system (select colors)
- Painted panels feature 45-year limited finish warranty coverage



# PBC

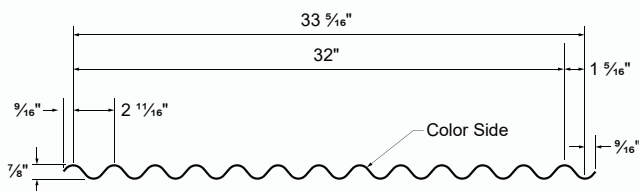
Designed for commercial, industrial, residential, and steel-framed building applications, the PBC Panel provides architects and designers a corrugated profile option which can be installed as both a roof and a wall panel. The PBC height creates the structural integrity required to allow installation over a solid substrate or open framing.

## SPECIFICATIONS

- Exposed fastener panel for roof and wall applications
- 3:12 minimum recommended roof pitch
- Suitable for solid deck or open framing

## SUBSTRATES AND COATINGS

- High-strength steel substrate
- Anti-corrosion Galvalume® coating for painted and unpainted steel
- 26 and 24 gauge unpainted Galvalume® Plus
- 26 gauge Signature® 200 siliconized polyester paint system (select colors)
- 26 gauge Signature® 300 polyvinylidene fluoride paint system (select colors)
- Painted panels feature 45-year limited finish warranty coverage



## TESTING AND APPROVALS

- UL 580 uplift resistance tested
- UL750 fire, class A rating
- UL2218 impact resistance, Class 4
- Florida Building Code Approved:
  - 42378.9 - 26ga or 24ga, 16ga (min) girts - wall
  - 42379.7 - 26ga or 24ga, 15/32 (min) plywood or 7/16" (min) OSB
  - 42379.8- .032 aluminum, 15/32 (min) plywood
  - 42382.10 - 26ga or 24ga, 16ga (min) girts



# 1-1/4" & 2-1/2" Corrugated



## TESTING AND APPROVALS

- Florida Building Code Approved:
  - 42379.6 - 26ga 2.5 Corrugated only, 19/32 (min) plywood

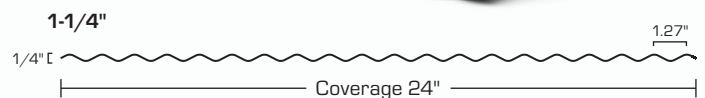
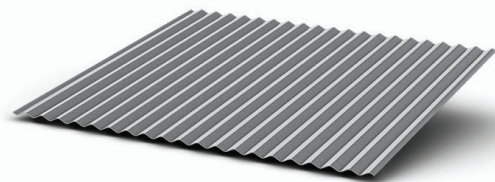
Corrugated panels are the original metal roofing and siding panels and are a traditional staple in agricultural applications. Today, usage has expanded beyond its rural roofing heritage and they are being increasingly used to add traditional and rustic looks to homes, restaurants, retail establishments, and many other building types.

## SPECIFICATIONS

- Exposed fastener panel for roof and wall applications
- 3:12 minimum recommended roof pitch
- Suitable for solid deck or open framing

## SUBSTRATES AND COATINGS

- High-strength steel substrate
- Anti-corrosion Galvalume® coating for painted and unpainted steel
- 29 and 26 gauge unpainted Galvalume® Plus
- Economy and 29 gauge unpainted galvanized with acrylic coating
- 26 gauge Signature® 200 siliconized polyester paint system (select colors)
- Painted panels feature 45-year limited finish warranty coverage



# 5V

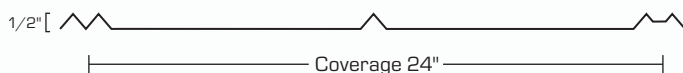
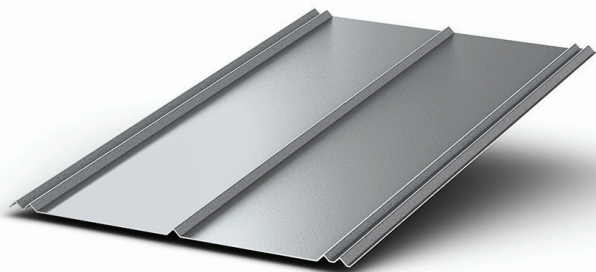
For generations, 5V metal roofing panels have been used on farm buildings and other rural metal roofing projects. Today, many homeowners have recognized that the timeless design is ideal for residential roofs as well. Our 5V metal roofing panels are especially popular in Florida and other coastal areas. Our 5V roof panels are designed with an enhanced “U” over “V” profile to provide maximum leak resistance.

## SPECIFICATIONS

- Exposed fastener panel for roof applications
- 3:12 minimum recommended roof pitch
- Suitable for solid decking or open framing
- Available in 24 Gauge Unpainted Galvalume®  
(\*Ocala only 24 gauge painted)

## SUBSTRATES AND COATINGS

- High-strength steel substrate
- Anti-corrosion Galvalume® coating for painted and unpainted steel
- 29 and 26 gauge unpainted Galvalume® Plus
- Economy and 29 gauge unpainted galvanized with acrylic coating
- 26 gauge Signature® 200 siliconized polyester paint system (select colors)
- Painted panels feature 45-year limited finish warranty coverage



## TESTING AND APPROVALS

- Metal Construction Association Certified
- Miami-Dade Approved for Wind Uplift
- Texas Department of Insurance Approved
- Highest UL Ratings for Wind Uplift, Fire and Impact Resistance
- No Coastal Set Back
- UL 580 Class 90 Wind Uplift Construction #579 and #642
- UL 790 Fire resistance Class A
- UL 2218 Impact resistance Class 4
- UL 1897 Uplift Test for Roof Covering
- Texas Department of Insurance Approval #119
- Miami-Dade County NOA 22-0207.02
- Metal Construction Association (MCA) Certified
- Florida Building Code Approved:
  - 42379.3 - 29ga, 15/32 (min) plywood or 7/16 (min) OSB
  - 42379.4 - 29ga, 15/32" or 19/32 (min) plywood



# PBR/IR Panel



## TESTING AND APPROVALS

- Metal Construction Association Certified
- No Coastal Set Back
- UL 580 Uplift UL 90 Construction #30, 79, 161, 167, and 638
- UL 790 Fire Resistance Class A
- UL 2218 Impact Resistance Class 4
- Florida Building Code Approved:
  - 42378.10 - 29ga - 22ga, 16ga (min) girts - wall
  - 42379.5 - 26ga or 24ga, 15/32 (min) plywood
  - 42832.12 - 22ga - 29ga, 16ga (min) girts

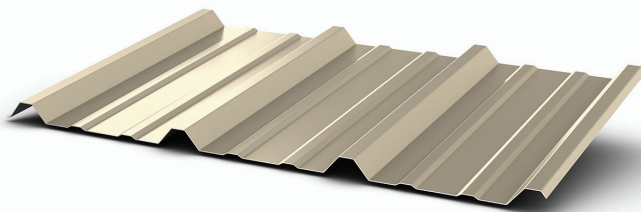
PBR and IR metal roofing panels are designed for industrial, commercial, and steel-frame building applications. The “R” family of metal roofing panels has the strength to perform on roof pitches as low as 1:12 and on spans up to five feet. IR panels are designed for sidewall applications while the PBR panel has an added purlin bearing leg to provide better support for roofing applications.

## SPECIFICATIONS

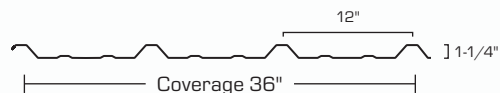
- Exposed fastener panel for roof and wall applications
- 1:12 minimum recommended roof pitch (PBR can go as low as 1:12)
- Suitable for solid deck or open framing

## SUBSTRATES AND COATINGS

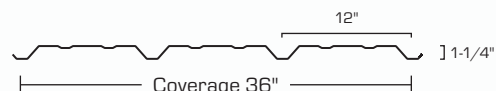
- High-strength steel substrate
- Anti-corrosion Galvalume® coating for painted and unpainted steel
- 26 and 24 gauge unpainted Galvalume® Plus
- 26 gauge Signature® 200 siliconized polyester paint system (select colors)
- Painted panels feature 45-year limited finish warranty coverage



PBR Panel



IR Panel



# PBU

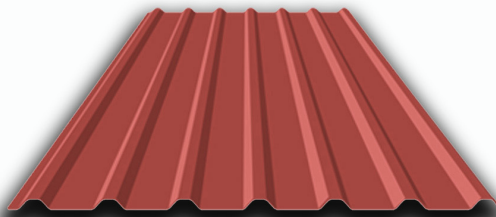
Union's PBU panel is a multi-use panel typically utilized in wall and soffit applications. With 36" of coverage and major ribs 6" on center, PBU panel can be installed both horizontally and vertically. Major ribs spaced 6" on center provide structural support and an aesthetic quality desired by building designers and architects.

## SPECIFICATIONS

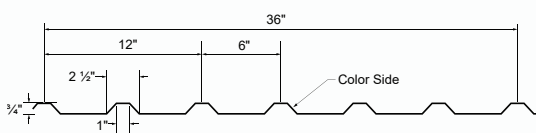
- Exposed fastener panel for soffit and wall applications
- Suitable for solid deck or open framing

## SUBSTRATES AND COATINGS

- High-strength steel substrate
- Anti-corrosion Galvalume® coating for painted and unpainted steel
- 26 and 24 gauge unpainted Galvalume® Plus
- 26 and 24 gauge Signature® 200 siliconized polyester paint system (select colors)
- 26 and 24 gauge Signature® 300 polyvinylidene fluoride paint system (select colors)
- Painted panels feature 45-year limited finish warranty coverage



PBU Panel



## TESTING AND APPROVALS

- UL 790 Fire Resistance Class A
- UL 2218 Impact Resistance Class 4
- Texas Department of Insurance Approval #RC-408
- Florida Building Code Approved:
  - 42382.13 - 26ga, 16ga (min) girts





## TESTING AND APPROVALS

Slimline® panels use an integrated fastener groove and have ribs that snap together securely without the use of clips.

- UL 790 Fire Resistance Class A
- UL 2218 Impact Resistance Class 4
- UL 90 Wind Uplift Construction No. 529
- Florida Building Code Approved:
  - 42380.3 - 26ga, 15/32" (min) plywood or 7/16" (min) OSB or 3/4 wood plank
  - 42380.4 - .032 aluminum, 15/32" (min) plywood or 7/16" (min) OSB or 3/4 wood plank
  - 42380.5 - 26ga, 15/32" (min) plywood or 3/4" wood plank

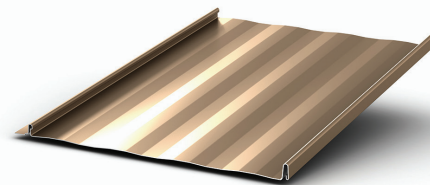
Standing seam roofs have been used on traditional and contemporary homes for more than a century. Their clean lines and fully concealed fasteners make them a favorite on a wide range of residential and commercial architecture. Our Slimline® panel offers low profile 1" high ribs that look great on residential and smaller commercial roofs. Slimline® panels use an integrated fastener groove and have ribs that snap together securely without the use of clips. All of our standing seam panels provide easy installation.

## SPECIFICATIONS

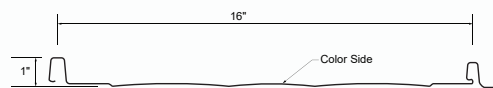
- Concealed fastener panel for roof applications
- Snap locking ribs
- Fastener groove for easy installation
- 3:12 minimum recommended roof pitch
- Suitable for solid decking

## SUBSTRATES AND COATINGS

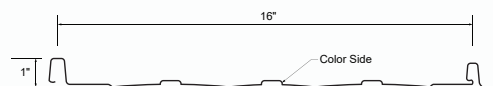
- High-strength steel substrate
- Anti-corrosion Galvalume® coating for painted and unpainted steel
- 26 and 24 gauge unpainted Galvalume® Plus
- 26 gauge Signature® 200 siliconized polyester paint system (select colors)
- 24 gauge Signature® 300 polyvinylidene fluoride paint system (select colors)
- Painted panels feature 45-year limited finish warranty coverage



**Slimline® Panel**  
With Striations



**Slimline® Panel**  
With Minor Ribs and Striations



# SL150

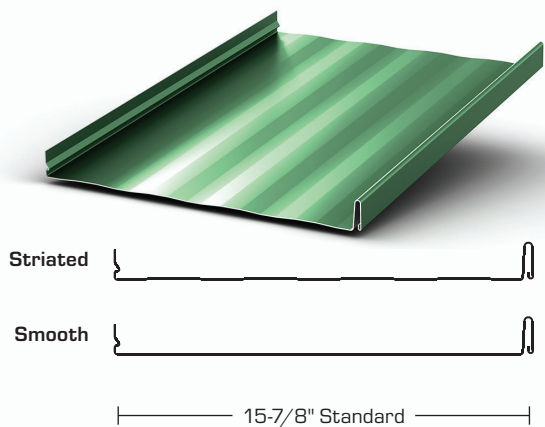
SL150 is a snap lock standing seam roof panel with 1.5" high ribs that installs with concealed clips. The clips allow the panel to freely expand and contract during thermal movement which can help ensure an aesthetically pleasing look when very long panel lengths are required. SL150 is popular in both residential and commercial applications and is a great choice for customers that prefer a taller rib profile or for roofs requiring very long panel lengths.

## SPECIFICATIONS

- Standing seam concealed fastener panel for roof applications
- Snap locking ribs
- Installs with clips
- 3:12 minimum recommended roof pitch
- Suitable for solid decking

## SUBSTRATES AND COATINGS

- High-strength steel substrate
- Anti-corrosion Galvalume® coating for painted and unpainted steel
- 26 and 24 gauge unpainted Galvalume® Plus
- 26 gauge Signature® 200 siliconized polyester paint system (select colors)
- 24 gauge Signature® 300 polyvinylidene fluoride paint system (select colors)
- Painted panels feature 45-year limited finish warranty coverage



## TESTING AND APPROVALS

- Florida Building Code High-Velocity Hurricane Zone Approved (Covers Miami-Dade Approval)
- Highest UL Ratings for Wind Uplift, Fire, and Impact Resistance
- Metal Construction Association Certified
- No Coastal Set Back
- UL 580 Construction #589
- UL 2218 Impact Resistance Class 4
- UL 790 Fire Resistance Class A
- ASTM E-283 Air
- ASTM E-331 Water
- Florida Building Code Approved:
  - 42380.6 - 24ga, 15/32" (min) plywood or 3/4" wood plank
  - 42380.7 - 24ga, 22ga (min) steel B-deck
  - 42380.8 - .032 aluminum, 15/32" (min) plywood, 7/16" (min) OSB, or 3/4" wood plank



# SL175



## TESTING AND APPROVALS

- ASTM E-1592 Wind Uplift
- ASTM E-1646 Water Infiltration
- ASTM E-1680 Air Leakage
- UL-90 Wind Uplift 254, 255, 303, 343, 414, 508, 508A
- UL 790 Class A Fire Resistance
- UL 2218 Impact Resistance Class 4
- Florida Building Code Approved:
  - 42380.9 - 24ga, 15/32" (min) plywood or 3/4" wood plank
  - 42380.10 - 24ga, 22ga (min) steel B-deck
  - 42830.11 - .032 aluminum, 15/32" (min) plywood or 3/4" wood plank

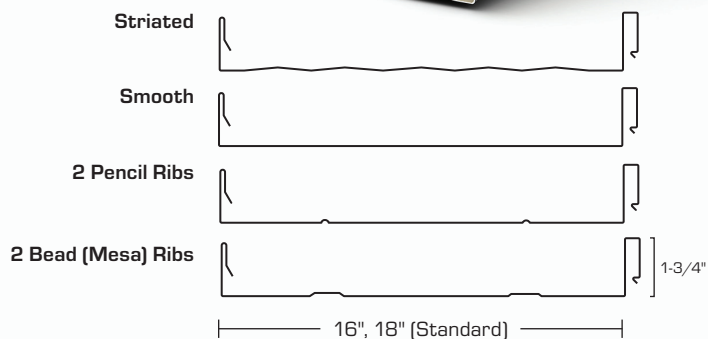
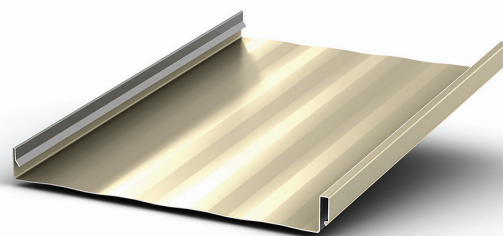
SL175 is a snap lock standing seam panel with 1.75" high ribs that can be used for architectural and light structural applications. The panel is secured with concealed clips and ribs that lock securely together. SL175 can be specified as an accent feature or a total roof system for schools, shopping centers, banks, hotels, offices, and a variety of other applications.

## SPECIFICATIONS

- Standing seam concealed fastener panel for roof applications
- Snap locking ribs
- Installs with clips
- 1:12 minimum recommended slope
- Suitable for solid deck
- Applicable for installations requiring weathertightness warranties

## SUBSTRATES AND COATINGS

- High-strength steel substrate
- Anti-corrosion Galvalume® coating for painted and unpainted steel
- 24 gauge unpainted Galvalume® Plus
- 24 gauge Signature® 200 siliconized polyester paint system (select colors)
- 24 gauge Signature® 300 polyvinylidene fluoride paint system (select colors)
- Painted panels feature 45-year limited finish warranty coverage



# DOUBLE-LOK®

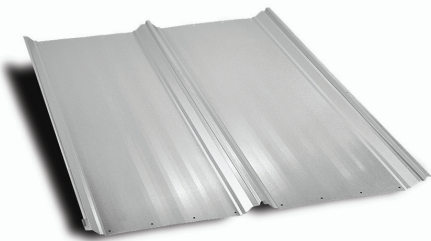
Double-Lok panels provide proven wind and weather protection under multiple roof loading conditions. Typically installed over open framing, the profile maintains its structural integrity with coverage options of 18" and 24". Mechanically field-seamed with ¼:12 minimum slope.

## SPECIFICATIONS

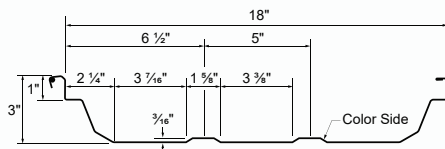
- Trapezoidal standing seam panel utilizing sliding clips and structural accessories for roof applications
- Mechanically seamed ribs
- Minimum slope recommendation= ¼:12
- Suitable for solid decking or open framing

## SUBSTRATES AND COATINGS

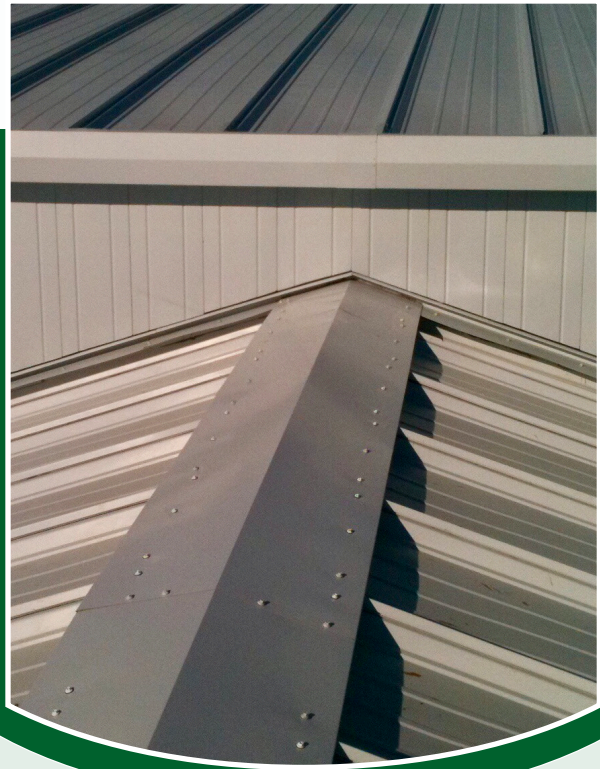
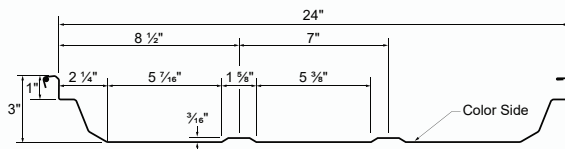
- High-strength steel substrate
- Anti-corrosion Galvalume® coating for painted and unpainted steel
- 24 gauge unpainted Galvalume® Plus
- 24 gauge Signature® 200 siliconized polyester paint system (select colors)
- 24 gauge Signature® 300 polyvinylidene fluoride paint system (select colors)
- Painted panels feature 45-year limited finish warranty coverage



DOUBLE-LOK® Panel



DOUBLE-LOK® Panel



## TESTING AND APPROVALS

- ASTM E-1592 Wind uplift
- ASTM E-1646 Water Infiltration
- ASTM E-1680 Air Leakage
- ASTM E-2140 Hydrostatic Head Resistance
- Florida Building Code Approved:
  - 42382.15 - 24ga or 22ga, 16ga (min) girts



# FL100



## TESTING AND APPROVALS

- Florida Building Code Approved:
  - 42378.1 - 24ga, 16ga (min) girts
  - 42378.2 - .032 aluminum, 16ga (min) girts

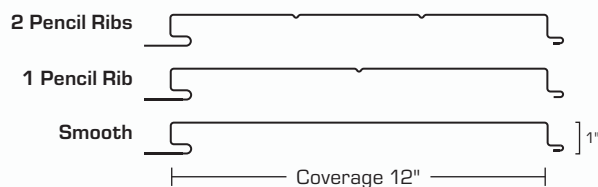
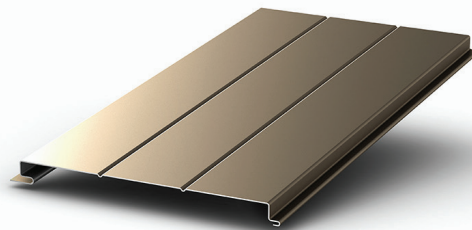
FL100 is a versatile panel that can be used on commercial and residential applications. The panel can be installed in a soffit application or vertically as a wall panel. Venting is available when used as a soffit panel. The interlocking mechanism allows for rapid installation and provides a flush appearance with completely concealed fasteners.

## SPECIFICATIONS

- Soffit and wall panel
- Suitable for solid substrate or open framing

## SUBSTRATES AND COATINGS

- High-strength steel substrate
- Anti-corrosion Galvalume® coating for painted and unpainted steel
- 26 and 24 gauge unpainted Galvalume® Plus
- 26 and 24 gauge Signature® 200 siliconized polyester paint system (select colors)
- 24 gauge Signature® 300 polyvinylidene fluoride paint system (select colors)
- Painted panels feature 45-year limited finish warranty coverage



# Warranties

We stand behind our products with exceptional warranty coverage for reliable protection. Premium quality Galvalume® steel offers corrosion resistance for lasting performance. Our panels are available in a wide range of colors using industry-leading SMP (Silicone Modified Polyester) or commercial grade PVDF (Polyvinylidene Fluoride) paint systems for lasting beauty. Our paint finish warranties feature no coastal setback for additional peace of mind.

Our painted metal panels are Cool Roof compliant through the CRRC-1 Program. For additional details about the benefits of Cool Roof materials, please visit [coolroofs.org](http://coolroofs.org).

	MasterRib	PBC	2-1/2" Corrugated	1-1/4" Corrugated	5V	Slimline	SL150	SL175	FL100	PBU	TS-324	PBR/IR
45 Year Signature® 200 SMP Limited Paint Warranty	■	■	■	■	■	■	■	■	■	■		■
45 Year Signature® 300 PVDF Limited Paint Warranty		■				■	■	■	■	■	■	
20 Year Galvalume® Limited Warranty	■	■	■	■	■	■	■	■	■	■	■	■



# Metal Roofing System Components

We offer a full selection of system components required to complete your roof or building and to ensure years of trouble-free service.

## SYSTEM COMPONENTS AND ACCESSORIES

Synthetic Underlayment—REPEL



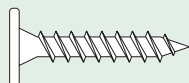
DripStop Condensation Control



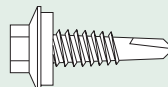
Wood Screws



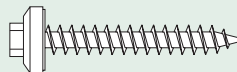
Pancake Head Wood Screws



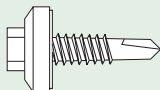
Lap Tek Screws



Ultimate Lifetime Warranty Wood Screws



Ultimate Lifetime Warranty Lap Tek Screws



Foam Closures



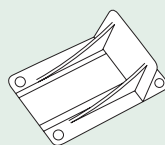
Emseal Expandable Closure



Standard, High Temp, and Retrofit Pipe Boots



Snow Guards



Polycarbonate Skylight Panels



**Talk to your Union sales representative should you need any other components.**

Cannonball Door Hardware



# Roof Edges and Flashing

**Do you sell asphalt shingles? Save money by combining your flashing and roof edge shipments with your metal roofing orders.**

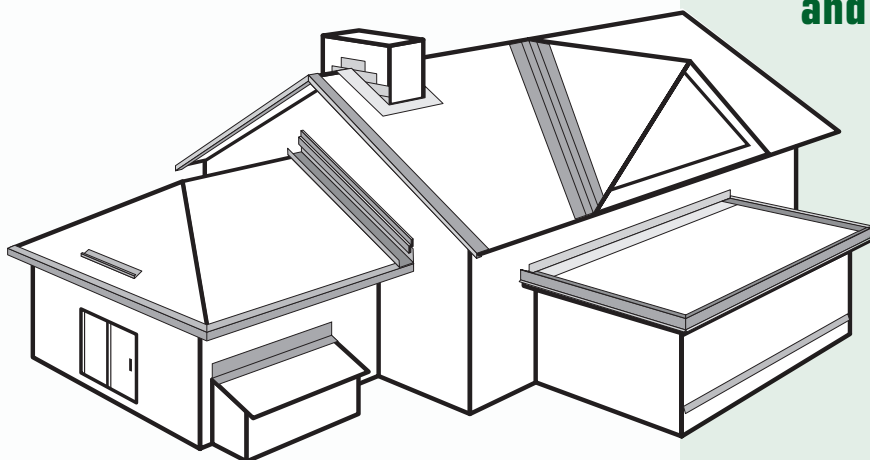
We offer a large selection of drip edges, roll flashing, step flashing, and other roof components designed to protect your roof against water infiltration. These products are available in various colors and materials—including aluminum, steel, vinyl, copper and lead.

Our Drip Edge and Flashing Catalog gives you the additional information you need, including sizes, colors, and more. Look for these products to help guard against water infiltration.

- Drip Edges
- Drip Caps
- Step Flashing
- Angle Flashing
- Preformed Valley
- Z Flashing
- Shingle Endwall Flashing
- Window/Door Cap
- Vinyl Ledger Board
- Gutter Apron
- Rain Diverter



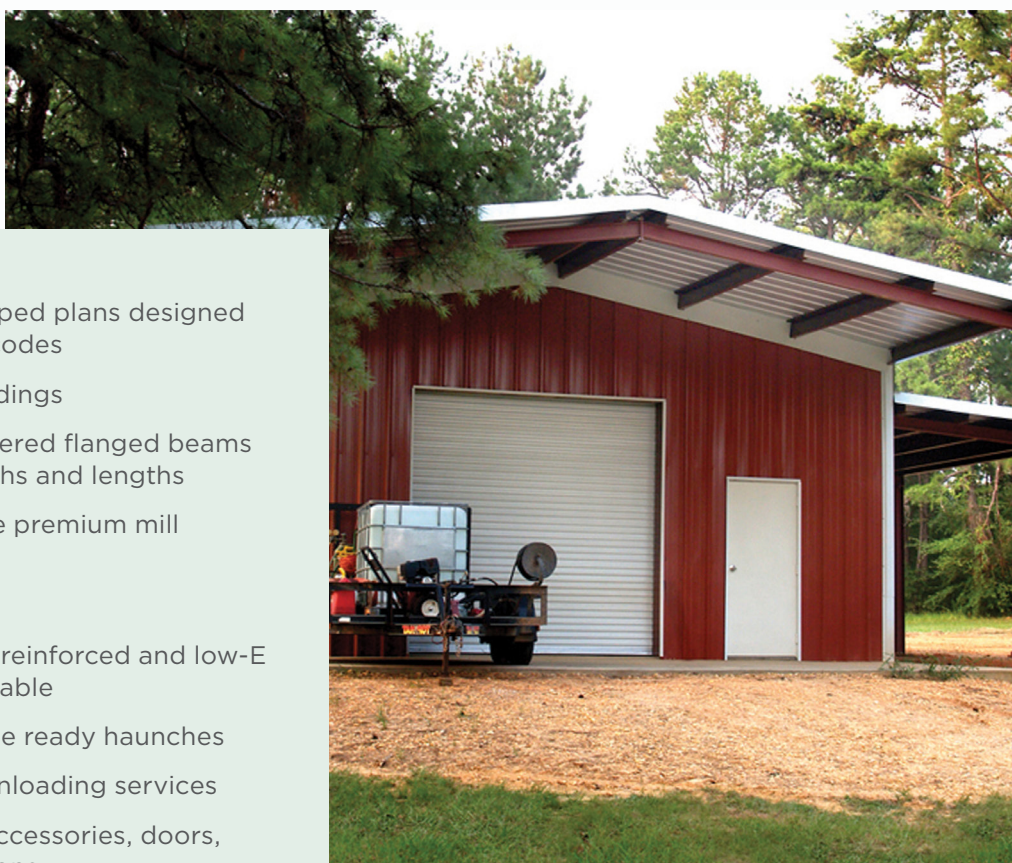
**Ask your Union sales representative for a copy of our Drip Edge and Flashing Catalog.**





# Pre-engineered Metal Buildings

Union now manufactures custom designed pre-engineered metal buildings for commercial, industrial, and residential applications. We can supply a complete package with factory welded, identified, marked, and pre-punched parts. All kits include a full set of easy to use erection drawings.



- Engineer stamped plans designed to meet local codes
- Clearspan buildings
- Straight or tapered flanged beams in custom widths and lengths
- 26 or 24 gauge premium mill certified steel
- Up to 30' bays
- Certified vinyl-reinforced and low-E insulation available
- Overhead crane ready haunches
- Delivery and unloading services
- Full range of accessories, doors, and other options
- Fastest deliveries in the industry
- IAS Certified manufacturing

# Pre-engineered Metal Buildings

## PRIMARY STEEL FRAME OPTIONS

For ultimate design flexibility your metal building can be designed to your desired dimensions and requirements. Clear Span and Multi-Span options are available to meet your needs. Other benefits are:

- Offers the capability for innovative designs and special applications
- All frame options can be designed for either bypass or flush wall girts
- Available with tapered or straight columns

## CLEAR SPAN FRAME

When you need large open spaces the Clear Span frame is the choice. It can be designed in symmetrical and asymmetrical configurations. Offers the capability for innovative designs and special applications.

## MULTI-SPAN FRAME

The Multi-Span frame is available in gable or single slope options. The interior columns provide multiple spans across wider buildings. This can be a more economical option on building widths of 80' and greater when interior columns are acceptable.

## SINGLE SLOPE FRAME

The Single Slope frame is available as clear span or multi-span. This is a flexible solution that offers the roof to slope in one direction. If there are drainage restrictions this can be an excellent option. Facades and parapets can be used to give the appearance that all surrounding walls are the same height.

## LEAN-TO FRAME

The Lean-To frame joins to, and is supported by, a main frame column. It is an economical way to extend or expand the square footage of an existing or new building. Leave the walls open to achieve a covered area span. This is a flexible solution that offers the roof to slope in one direction. If there are drainage restrictions this can be an excellent option. Facades and parapets can be used to give the appearance that all surrounding walls are the same height.

Secondary framing options are available, see a Union Sales Representative for additional details.



**Straight Columns**



**Tapered Frames**



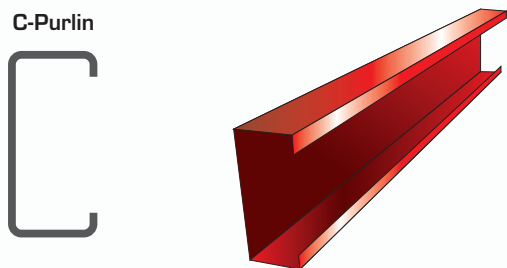
# Metal Building Components



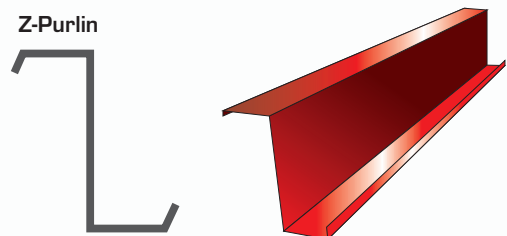
Union now offers a full range of secondary structural framing components including Cees, Zees, Receiver Channel and Eave Struts in custom lengths to reduce field cutting. These components are available in standard punch patterns or can be custom slotted or punched to reduce field drilling.

- C and Z purlins
- Receiver Channel
- Eave Struts
- Base Angle
- Hat Channel
- 12, 14, and 16 gauge
- Red Oxide or galvanized

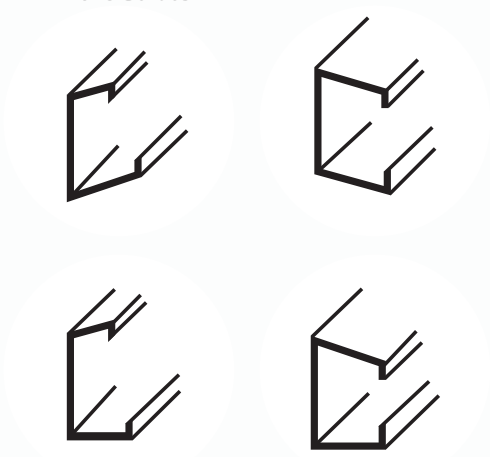
C-Purlin



Z-Purlin



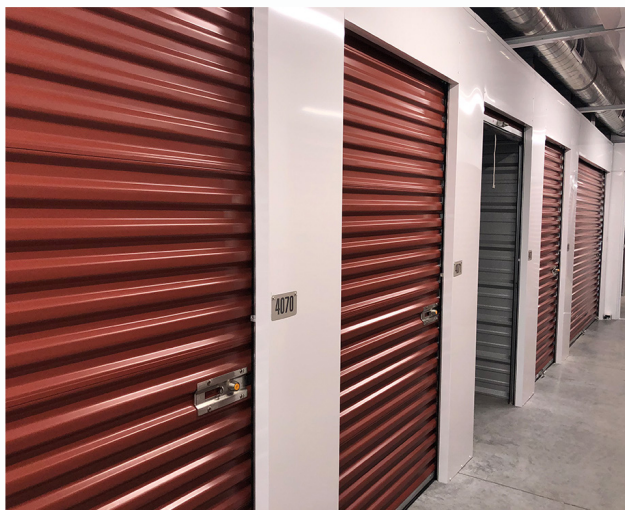
Eave Struts



# Mini Storage Solutions

Union now offers a full range of mini-storage solutions along with in-house technical and engineering support to help you design the building you need.

**Call your Union sales representative to get connected to one of our mini storage experts!**



- Full range of climate control, boat and RV, and open canopy units
- In-house engineering and drafting services
- Layout and design assistance available
- Commercial and self-storage roll-up doors in assorted colors
- Insulation packages to meet R-value needs
- Over 20 colors to choose from





# MasterQuote Online Order System

MasterQuote is an advanced online system that allows you to easily generate estimates, price jobs, create custom quotations, and enter orders.

## FEATURES INCLUDE

### Online Pricing Database

Your secure login gives you access to your current pricing for all Union products. No need to call the plant for price confirmation.

### Customized Quoting

The quoting feature allows you to create customized quotations for your customers that even incorporate your logo. You can choose how much to mark-up your quote and whether to show itemized or lump-sum pricing.

### Easy Online Ordering

Once you're ready to order there's no need to re-create your work or fax anything to the plant. Simply retrieve the quote you're ready to order and click "Submit Order".

### No Software to Download

MasterQuote is a cloud-based program which means there's no software to download and you can access it anywhere you have an internet connection, even on mobile devices.

### Unlimited Users

You can set up accounts for as many people as you like. All you need are unique e-mail IDs for each user.

### FastQuote Budgetary Estimate Tool

Allows you to quickly generate budgetary estimates for the total price of a metal roofing package based on square footage and roof complexity.

✓ Estimating

✓ Pricing

✓ Quoting

✓ Ordering

The screenshot displays the MasterQuote web application. At the top, there's a header with the 'Your Logo' placeholder and a 'Customer Quote' title. Below this, a form contains customer information (From/To) and project details (Project Name, Contact Name, Contact Phone). A table lists items with columns for Item Number, Part Number, Description, Ordered, Price, and Total. Below the table, there's a section for 'OUR ROOFS ARE ON TOP' with a 'FastQuote' tool. The tool includes fields for Panel Type, Gauge, Color/Finish, Length, and Quantity, along with an 'Add to Quote' button. On the right side, there's a sidebar with navigation links like 'Estimating', 'Pricing', 'Quoting', and 'Ordering'. At the bottom, a summary table shows the total price for the quote.

Item Number	Part Number	Description	Ordered	Price	Total
1	TR008020003	MasterRib® 29 gauge Terracotta Red 24ft. bin	17	\$ 62.14	\$1,056.38
2	TR008020003	MasterRib® 29 gauge Terracotta Red 24ft. bin	12	\$ 63.02	\$ 756.24
3	TR008020003	MasterRib® 29 gauge Terracotta Red 24ft. bin	14	\$ 71.26	\$1,040.14
4	TR008020003	MasterRib® 29 gauge Terracotta Red 24ft. bin	10	\$ 27.94	\$ 279.40
5	TR008020003	MasterRib® 29 gauge Terracotta Red 24ft. bin	4	\$ 21.14	\$ 84.56

Part Number	Panel	Gauge	Color	Length	Width	Qty	Price (\$)	Total
TR008020003	MasterRib®	29 gauge	Terracotta Red	24	3	17	\$1.76	\$29.92
TR008020003	MasterRib®	29 gauge	Terracotta Red	24	3	12	\$1.76	\$21.12
TR008020003	MasterRib®	29 gauge	Terracotta Red	24	3	14	\$1.76	\$24.64
TR008020003	MasterRib®	29 gauge	Terracotta Red	24	3	10	\$1.76	\$17.60
TR008020003	MasterRib®	29 gauge	Terracotta Red	24	3	4	\$1.76	\$7.04

Page Total: \$2,593.30

# MetalPro Contractor Program

## PROGRAM BENEFITS

### Factory Training

Receive installation training for through-fastened and screw flange standing seam products. After attending, you can be listed on our Website Contractor Finder.

### Sales Leads

Union's Contractor Finder receives inquiries each month, which generates hundreds of qualified leads.

### Rewards

Receive a rebate on your first order and reward dollars for your Union metal roofing purchases.

### Sales Tools

Receive display boards, color samples, technical catalogs, etc. that you can use after your training session is over.

### Awards and Recognition

Annual awards given for various categories regarding contractor performance.

### Email:

**[metalproInstitute@cornerstone-bb.com](mailto:metalproInstitute@cornerstone-bb.com)**  
for additional information



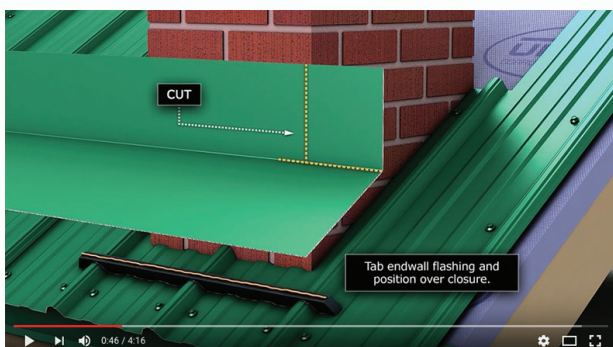
Our MetalPro program is the #1 Metal Roofing Contractor Network in the U.S., providing a high level of customer service, promoting the benefits of metal roofing, and using high quality, manufacturer recommended installation techniques and materials. MetalPro contractors have access to many benefits designed to help them grow their business and distinguish themselves from the competition.

**Over 1,000  
members**

**8,800  
homeowners**  
use the Contractor  
Finder each year

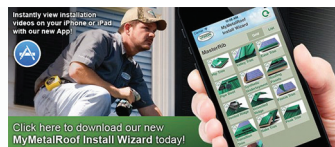
# Helpful Tools: Videos and Apps

At Union, we've used our technical expertise to develop some of the most helpful installation tools in the industry. We are the only major manufacturer of metal roofing that carries the applicable roofing contractor licensing for every state we do business in, ensuring that we have the latest codes and techniques. Providing these tools is another way we have focused on our mission of being the most convenient supplier to our customers.



## INSTALLATION VIDEOS

Union's 3D digitally animated installation videos take you through every step of the installation process and are broken down into easy-to-follow segments. They can be viewed both on our website and on YouTube.



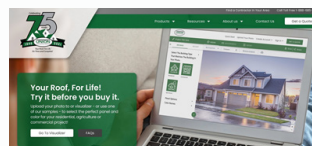
## MYMETALROOF INSTALL WIZARD APP

Download our free app for iPhone or iPad from our website or through the iTunes App Store. The app lets you view and download all of our installation videos on your mobile device.



## MYMETALROOF VISUALIZER APP

Union's Visualizer App is the most advanced in the industry, using state-of-the-art image mapping integrated into the iPad touch screen technology—taking the guesswork out of your roof choices before you buy. Our Visualizer App lets you visualize your home with a metal roof quickly and easily. Simply upload a photo of your home, follow the directions, and you can see what your home will look like with Union's full range of metal roof styles and colors. Download our free app for iPad from our website or through the iTunes App Store.



## INTERACTIVE VISUALIZER TOOL

UNIONCORRUGATING.COM

### Features include

- 3D Viewer
- First in Industry Before/After Viewer for side-by-side comparison/slider
- Users can sample projects or upload their own image(s) for the purposes of applying roofing, siding, and trim to exterior building/home scenes
  - All colors and 3D panel types included
  - Create a Design Report Option Available





## METAL ROOFING | METAL PANELS | METAL BUILDING SOLUTIONS FOR RESIDENTIAL, COMMERCIAL & AGRICULTURAL MARKETS

Manufacturing facilities strategically located for **FAST** and **RELIABLE SERVICE**

### Ocala, FL

490 Oak Rd.  
Ocala, FL 34472  
800-331-3584

### Tifton, GA

3365 US Hwy 41 S.  
Tifton, GA 31794  
800-962-9131

### Vicksburg, MS

1463 Interplex Circle  
Ceres Industrial  
Complex  
Vicksburg, MS 39183  
888-661-0577

### Fayetteville, NC

701 S. King St.  
Fayetteville, NC 28301  
888-685-7663

### Dayton, OH

625 N. Third St.  
Tipp City, OH 45371  
877-615-9812

### Scranton, PA

100 Keystone  
Industrial Park Rd.  
Ste. 2B  
Dunmore, PA 18512  
570-383-2847

### Morrison, TN

7747 Manchester Hwy  
Morrison TN 37357  
931-668-4393

### Janesville, WI

3920 Kennedy Rd.  
Janesville, WI 53545  
877-615-9812



*Your Roof. For Life!  
On Time and Complete!™*